

2025 PARIS, KY TREE MAPPING REPORT



PREPARED BY THE URBAN FOREST INITIATIVE
UNIVERSITY OF KENTUCKY



Background

Chief Reed Park is located at the end of Stewart Street between the city’s trash incinerator, Houston Creek, and a single-family home neighborhood. The park is 4.36 acres and has two basketball courts, a playground, and a gazebo with picnic tables.

About the Trees

47 trees, 7 species

Overall health



The southernmost trees are in good health. Many of the trees in the densest area are weedy and in poor health.

Species Diversity



Black locust and hackberry dominate the canopy. It is recommended that no more than 10% of one species, 20% of one genus, or 30% of one family make up a site’s canopy.

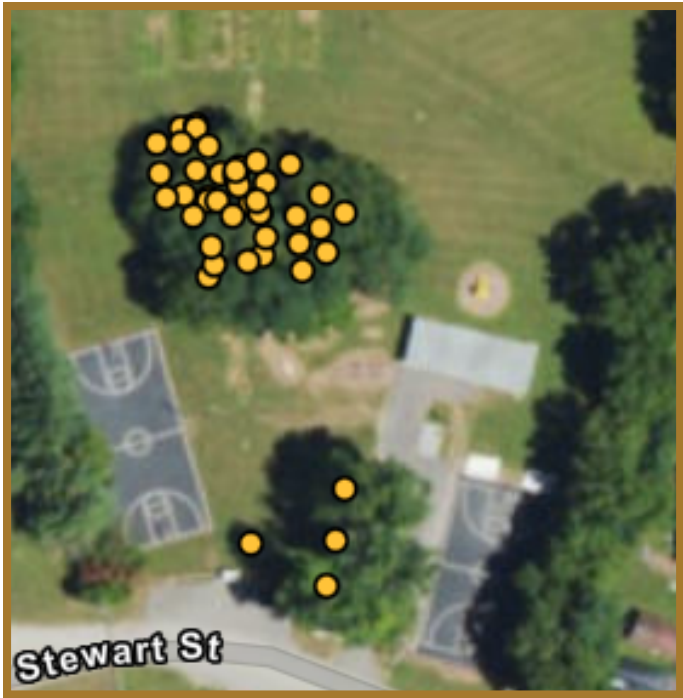
Size Diversity



Mid-sized trees dominate the canopy, but there are a fair amount of both large and small trees.

Consideration: Plantings of diverse species will raise this site’s resilience to host-specific pests, fill out tree size gaps, and replace aging trees over time.

Trees of Chief Reed Park mapped



Dominant trees at Chief Reed Park

Tree species	# of trees	% total
Black locust	26	56%
Hackberry	12	26%
Mulberry	3	6%
Pin oak	3	6%
other	3	6%
total	47	100%



Background

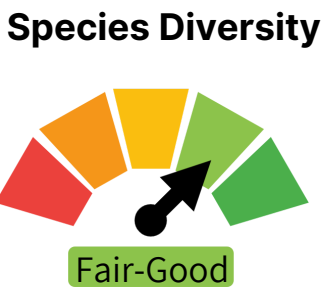
Fire Department #2 sits on a 1.2-acre lot on M.L.K. Jr Boulevard, next to Patrick Brannon Memorial Dog Park. It is one of three fire stations in Paris.

About the Trees

5 trees, 3 species



All of the trees mapped are in fair to good health.



There are only five trees on site, but three are silver maples. If additional trees are planted, other species are recommended.



Most of the trees are mature, measuring 16+ inches in diameter. Planting young trees will add to the size diversity, increase the site’s resistance to host-specific pests, and replace aging trees over time.

Trees of Fire Department #2 mapped



Trees at Fire Department #2

Tree species	# of trees	% total
Silver maple	3	60%
Sugar maple	1	20%
Sweetgum	1	20%
other	0	0%
total	5	100%



Background

Garrard Park is one of the largest parks in Paris. It includes 31 acres off Fithian Avenue adjoining Stoner Creek. Amenities include four baseball fields, a basketball court, and a gazebo with picnic tables.

About the Trees

50 trees, 14 species

Overall health



Several trees along the northern park perimeter are impaled by fencing and have insect damage. Most other trees are in good health.

Species Diversity



Hackberry dominates the canopy, though there is a good variety of other species.

Size Diversity



There is a great variety of tree sizes. Planting a variety of young trees will help replenish the aging trees over time.

Trees of Garrard Park mapped



Dominant trees at Garrard Park

Tree species	# of trees	% total
Hackberry	11	22%
Black cherry	7	14%
Pin oak	6	12%
Boxelder	4	8%
Red maple	4	8%
other	18	36%
total	50	100%



Background

Hopewell Springs Park is a 1.19-acre historic park in downtown Paris. There is a walking path, open space, benches, and a historic marker.

About the Trees

15 trees, 8 species

Overall health



Leaf and wood health is good in the majority of trees. A small number of trees have considerable dieback and/or leaf scorch.

Species Diversity



Black walnut trees represent more than one-quarter of the 15 trees on site, but there is a healthy mix of other species.

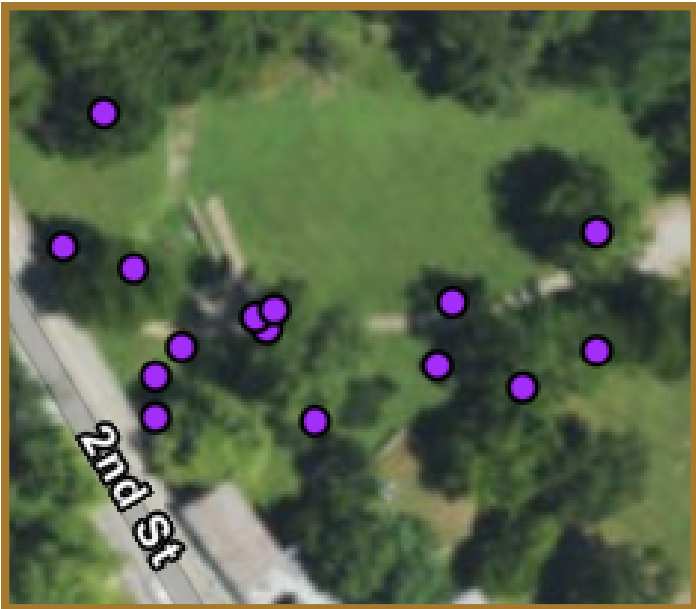
Size Diversity



There are trees of all sizes at this park, though larger trees (16"-24") are relatively abundant and mid-sized trees are relatively rare.

Consideration: Plantings of diverse species and ages will raise the park’s resilience to host-specific pests, fill out tree size gaps, and replace aging trees over time.

Trees of Hopewell Springs Park mapped



Dominant trees at Hopewell Springs

Tree species	# of trees	% total
Black walnut	4	27%
Bald cypress	2	14%
Boxelder	2	13%
Redbud	2	13%
White oak	2	13%
other	3	20%
total	15	100%



Background

Patrick Brannon Memorial Dog Park is a 3.1 acre fenced lot with benches and open space for pets. It is located across the street from Fire Department #2 on Wes Lee Drive.

About the Trees

17 trees, 5 species

Overall health



The trees in this park are in good health. Planting more diverse species would make it more resilient to potential host-specific pests in the future.

Species Diversity



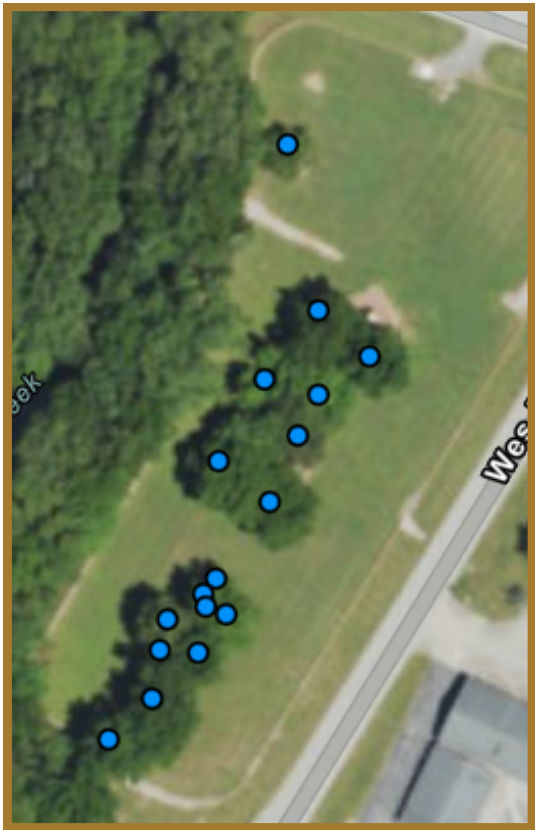
Black walnut dominates the canopy. It is recommended that no more than 10% of one species, 20% of one genus, or 30% of one family should make up a site’s tree canopy.

Size Diversity



Mid-sized trees are disproportionately abundant. Consider planting a variety of young trees to fill out the size gap and replace aging trees over time.

Trees of the dog park mapped



Dominant trees at Patrick Brannon Memorial Dog Park

Tree species	# of trees	% total
Black walnut	10	59%
Elm	3	17%
Hackberry	2	12%
other	2	12%
total	17	100%