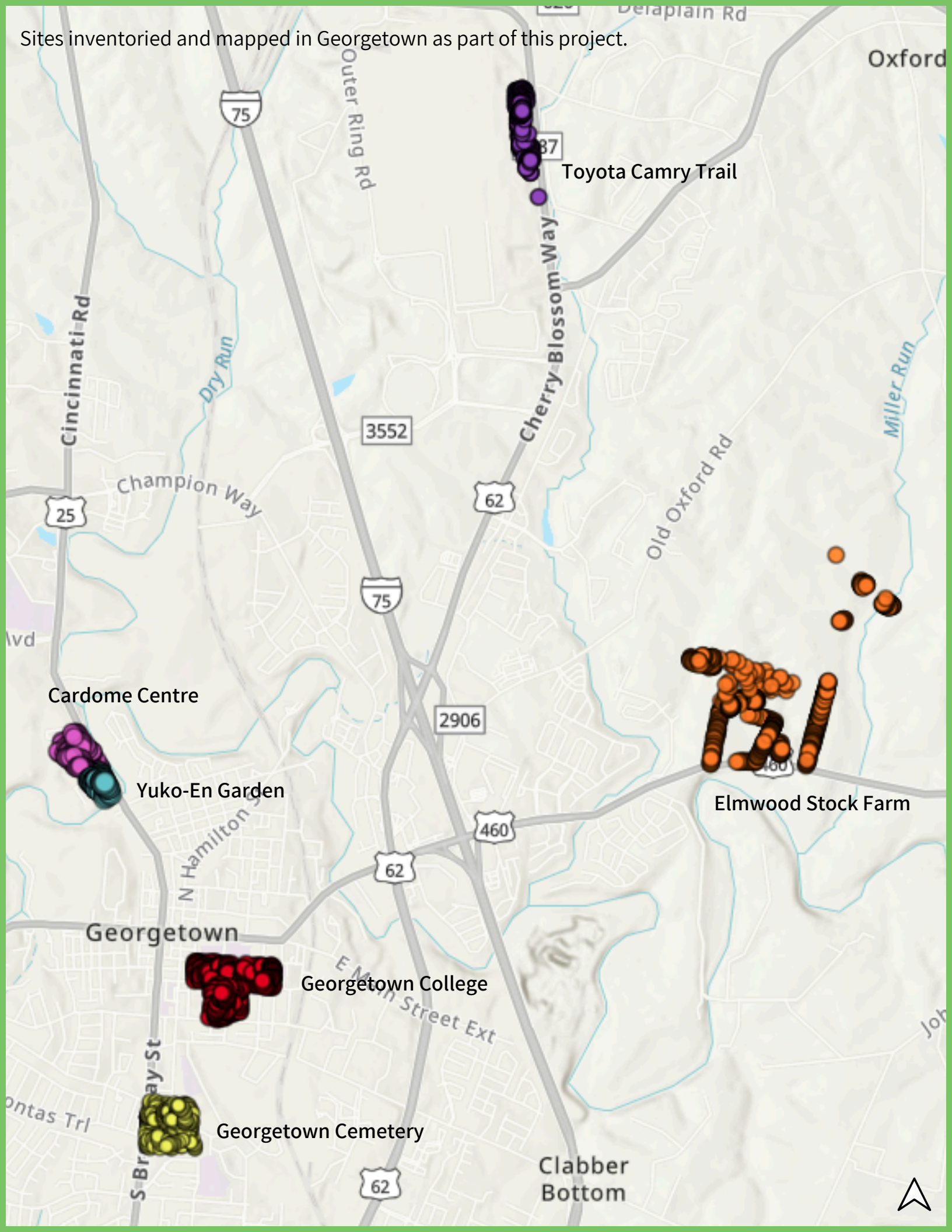


Sites inventoried and mapped in Georgetown as part of this project.



Toyota Camry Trail

Cardome Centre

Yuko-En Garden

Georgetown College

Georgetown Cemetery

Elmwood Stock Farm

Clabber Bottom



Cardome Historic Centre

800 Cincinnati Rd, Georgetown, KY



Background

Cardome Historic Centre has been an important part of Georgetown's history and community since 1821, promoting the arts and education, and cultivating a sense of community. The site features many amazing, mature trees, such as the large ginkgo found east of the main building and healthy examples of other tree species. Each tree works to benefit the ecosystem and people who visit the Centre. In June 2022, the University of Kentucky Urban Forest Initiative (UFI) team mapped and measured trees at Cardome.

It is recommended that no more than 10% of any one species, 20% of any one genus, and 30% of any one family make up a location's canopy.

About the trees

193 trees, 37 species

Size Diversity



There are many large trees, but not many smaller trees. Planting young trees will help replace the large, aging trees that will die over time.

Species Diversity



Tree diversity is fair, but the number of red maple (>20% of the total) slightly exceeds recommendations. As more trees are planted, efforts should be made to promote native tree diversity.

Overall health



The Cardome Centre trees are in good health, which helps provide numerous benefits (e.g. stormwater mitigation, cooling shade, aesthetics).



Tree species	# of trees	% total
red maple	41	21%
white ash	31	16%
sugar maple	15	8%
Norway spruce	12	6%
tree of heaven	11	6%
other	83	43%
total	193	100%

These trees annually provide...

103,216

gallons of stormwater capture

3,503

ounces of pollution removal

7,137

pounds of carbon sequestration

\$1,966

annual monetary benefits

Georgetown Cemetery

710 S Broadway Street, Georgetown, KY



Background

Georgetown Cemetery, incorporated in 1850, is the resting place of historic Georgetown figures. In June 2022, the University of Kentucky Urban Forest Initiative (UFI) team mapped trees at Georgetown Cemetery.

It is recommended that no more than 10% of any one species, 20% of any one genus, and 30% of any one family make up a location's canopy.

About the trees

266 trees, **57** species

Overall health



The majority of trees are in good health. Unfortunately, there are also many in poor health, and a few are dead or dying.

Species Diversity



Tree diversity at Georgetown Cemetery is good. Eastern red cedar is the dominant species at 13%.

Size Diversity



Tree size distribution is fair. New plantings should include smaller trees.



Tree species	# of trees	% total
Eastern red cedar	36	13%
crabapple	25	9%
white pine	21	8%
American holly	14	5%
flowering dogwood	13	5%
other	157	59%
total	266	100%

These trees annually provide...

133,123

gallons of stormwater capture

7,360

ounces of pollution removal

8,920

pounds of carbon sequestration

\$139,911

annual monetary benefits



Background

Georgetown College has been an integral part of the larger Georgetown community since it was chartered in 1829. Its diverse tree canopy provides a beautiful environment for learning and recreating with others. Research proves that a view of trees, even through a classroom window, can have stress-relieving effects, while shade keeps temperatures lower overall. In August 2021, the University of Kentucky Urban Forest Initiative (UFI) team mapped trees at Georgetown College.

It is recommended that no more than 10% of any one species, 20% of any one genus, and 30% of any one family make up a location's canopy.

About the trees

376 trees, 58 species

Overall health



Georgetown College trees are in good health and provide numerous benefits in this highly used space.

Species Diversity



Tree species diversity is great. No species makes up more than 10% of the overall canopy. As more trees are planted, consider planting a diversity of native species.

Size Diversity



Mature trees provide the most benefits for an ecosystem, so continue planting young trees to replace the aging trees that will die over time.



Tree species	# of trees	% total
hackberry	35	9%
red maple	30	8%
flowering dogwood	26	7%
black walnut	22	6%
southern magnolia	20	5%
other	243	65%
total	376	100%

These trees annually provide...

187,215

gallons of stormwater capture

6,415

ounces of pollution removal

11,351

pounds of carbon sequestration

\$3,024

annual monetary benefits

Toyota Camry Trail

Toyota Motor Manufacturing Kentucky, Georgetown, KY



Background

Toyota Motor Manufacturing KY (TMMK) has been an important branch of global Toyota vehicle production since 1988. In Summer 2023, the University of Kentucky Urban Forest Initiative (UFI) team mapped trees on the Camry Trail off Cherry Blossom Way.

It is recommended that no more than 10% of any one species, 20% of any one genus, and 30% of any one family make up a location's canopy.

About the trees

Overall health



The trees along this trail are in good health and provide numerous benefits to the area.

Species Diversity



Crabapple, white pine, and Japanese cherry are disproportionately numerous. Future plantings should include a variety of native species.

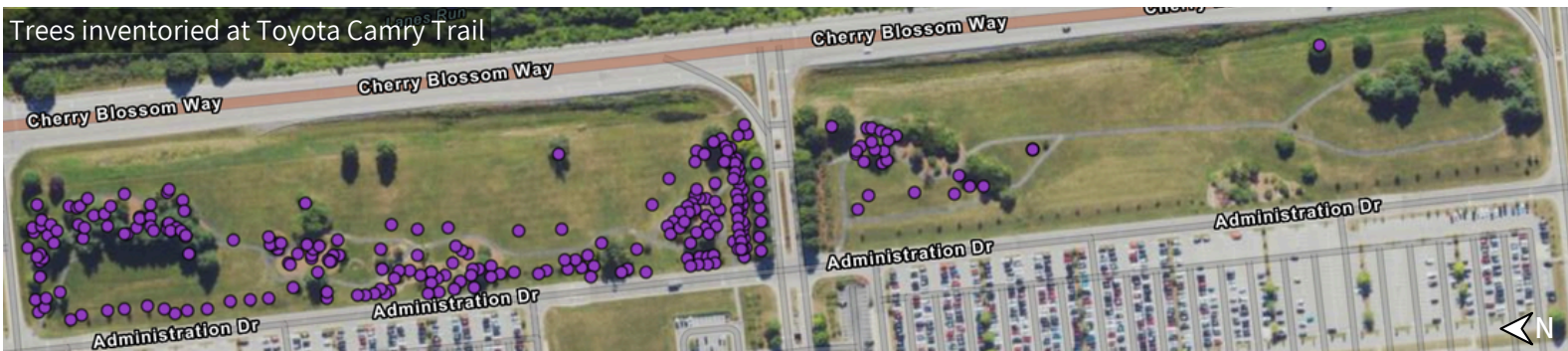
Size Diversity



Although there are many mature trees, planting young trees is recommended to diversify the tree canopy.

259 trees, 22 species

Tree species	# of trees	% total
crabapple	52	20%
white pine	47	18%
Japanese cherry	46	18%
redbud	15	6%
hawthorn	15	6%
other	84	32%
total	259	100%



These trees annually provide...

57,414

gallons of stormwater capture

3,200

ounces of pollution removal

5,280

pounds of carbon sequestration

\$44,540

annual monetary benefits

Yuko-En on the Elkhorn

700 US-25 N, Georgetown, KY



Background

The Yuko-En Garden is a greenspace dedicated to recreation and calming through nature. Researchers say that exposure to trees has an inherent calming effect. In June 2022, the University of Kentucky Urban Forest Initiative (UFI) team mapped trees at Yuko-En.

It is recommended that no more than 10% of any one species, 20% of any one genus, and 30% of any one family make up a location's canopy.

About the trees

151 trees, 28 species

Overall health



The majority of trees are in good or fair health and provide numerous benefits.

Species Diversity

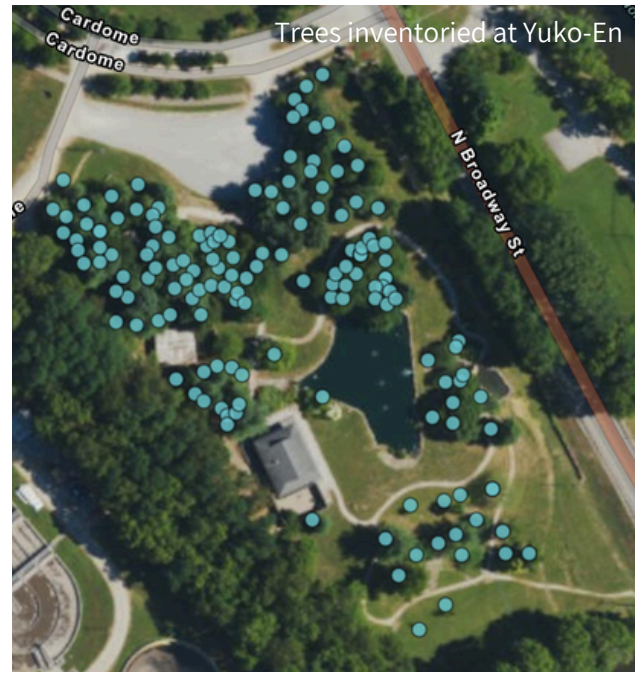


White pine, redbud, and Eastern red cedar dominate the canopy. As more trees are planted, consider planting a diversity of native species.

Size Diversity



Most trees are medium size. A healthy canopy should have plenty of all sizes, with a focus on planting new trees to replace large trees that will die over time.



Tree species	# of trees	% total
white pine	34	23%
redbud	31	21%
Eastern red cedar	18	12%
sugar maple	17	11%
red maple	11	7%
other	40	26%
total	151	100%

These trees annually provide...

38,919

gallons of stormwater capture

2,240

ounces of pollution removal

2,660

pounds of carbon sequestration

\$28,300

annual monetary benefits